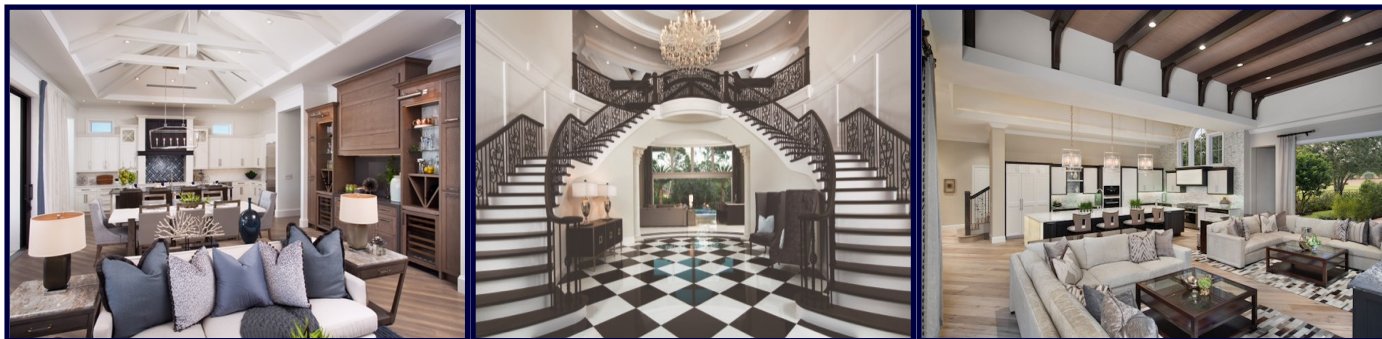


SOUTHEASTERN BASED FULL-SERVICE INTERIOR DESIGN FIRM



2018 Estimated Revenue: \$18,000,000 | 2018 Estimated EBITDA: \$3,100,000



The Company is a full-service interior design firm with a diverse set of capabilities. Services include architectural detailing, model home merchandising, comprehensive custom home renovations, and interior design for luxury home owners and builders.

The design firm typically completes 40 to 50 engagements per year with an average invoice of approximately \$300,000. An impressive portfolio reflects skill and expertise across all services offered as well as a variety of styles including coastal, contemporary, mountain retreat, traditional, and transitional.

Our client is registered as an S-Corporation and the shareholder is supported by a qualified team of 28 full-time employees.

Investment Considerations:

- *Historical Revenue increased at a CAGR of 21.6% from 2015 to 2017*
- Highly profitable operation with Adjusted EBITDA margins of 15.1% in 2017
- High quality design work and superior customer service have resulted in numerous honors and awards on the local, regional, and national levels as well as a website filled with testimonials from consumers expressing sincere satisfaction
- Diversified customer base with minimal if any concentration
- Strategic partnerships established provides opportunity to use designer furnishings from notable brands

(Financial Summary on Reverse Side)

Terry Mackin, Sr. Managing Director
(O): (214) 529-4598
Email: tmackin@generational.com

Client #62163

www.Generational.com | www.DealForce.com

DISCLAIMER: All information contained in this document has been provided by the subject company to Generational Equity, Inc. and while believed to be correct has not been verified. Accordingly, Generational Equity, Inc. makes no representations or warranties as to the accuracy and truthfulness of such information. The recipient hereof acknowledges that Generational Equity, Inc. shall not be liable for any loss or injury suffered by said recipient in any way connected to the delivery by Generational Equity, Inc. of this document. At all times Generational Equity, Inc. and its affiliate network members is an agent for the seller and not for the buyer. **Generational Equity's fees are paid by the seller.**



***Recast Historical and Pro Forma Statement of Income
For the Fiscal Years Ended December 31 (\$000)***

	<i>Historical</i>			<i>Est.</i>	<i>Projected</i>		
	2015	2016	2017	2018	2019	2020	2021
<i>Sales</i>	9,996	10,897	14,783	18,000	19,100	20,200	21,400
<i>% Growth</i>	--%	9.0%	35.7%	21.8%	6.1%	5.8%	5.9%
<i>EBIT</i>	254	1,319	2,178	3,035	3,230	3,427	3,641
<i>% of Sales</i>	2.5%	12.1%	14.7%	16.9%	16.9%	17.0%	17.0%
<i>EBITDA</i>	340	1,390	2,228	3,065	3,273	3,482	3,709
<i>% of Sales</i>	3.4%	12.8%	15.1%	17.0%	17.1%	17.2%	17.3%

***Adjusted Balance Sheet
As of December 31, 2017 (\$000)***

Current Assets	8,374	Current Liabilities	8,275
Net Fixed Assets	150	Non-Current Liabilities	--
Other Assets	--	Equity	250
Total Assets	8,525	Total Liability & Equity	8,525

For additional information regarding: [Client #62163](#)

Execute and return the accompanying Generational Equity
Confidentiality Agreement via email to
tmackin@generational.com

Fax to: (312) 893-5505